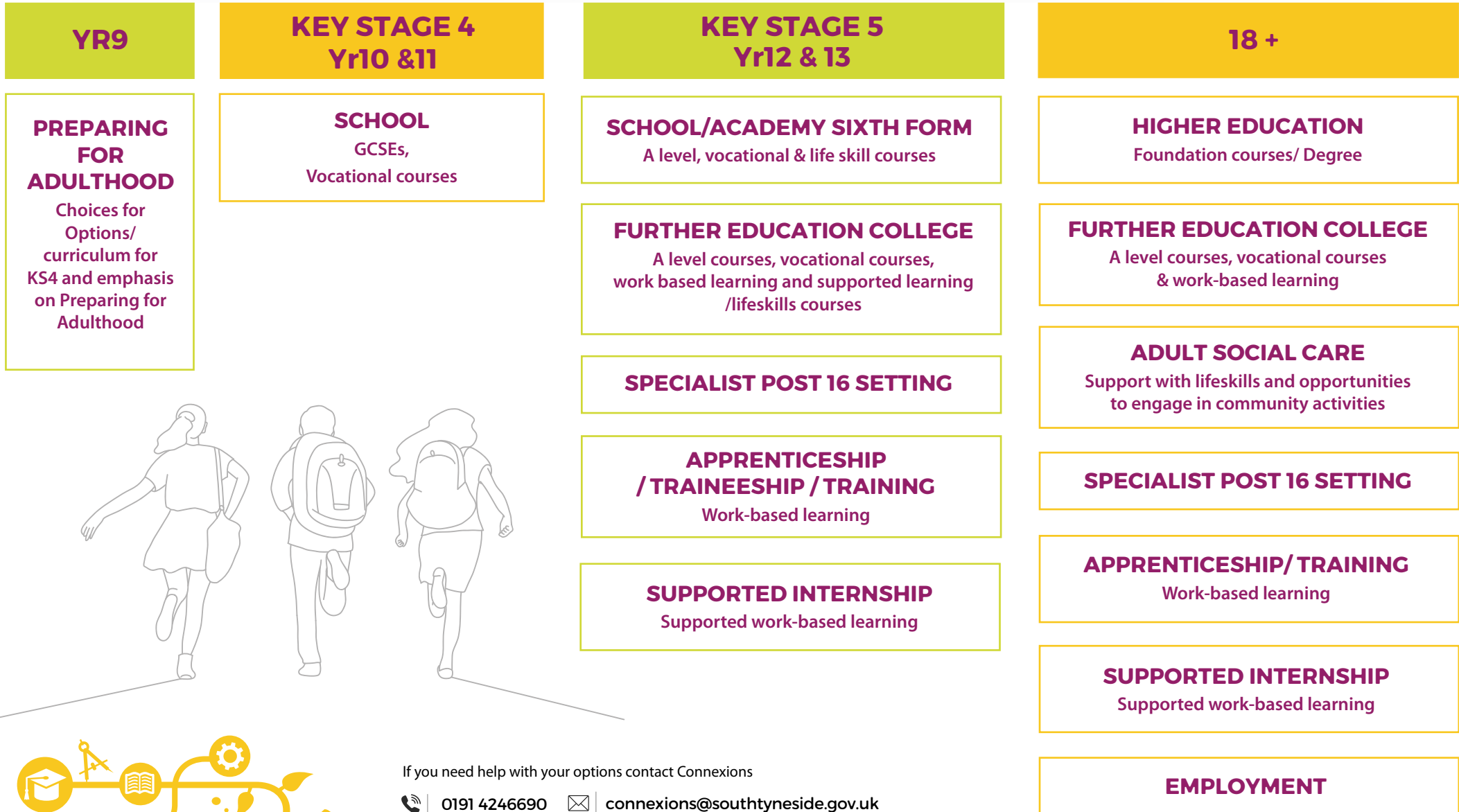


South Tyneside Post 16 Pathways



If you need help with your options contact Connexions

📞 0191 4246690 ✉️ connexions@southtyneside.gov.uk

Provider Options

SCHOOL/ACADEMY SIXTH FORMS

A level course, vocational courses and lifeskills courses

Sixth forms are attached to secondary schools and offer courses for 16-19-year olds.

Every sixth form is different, but sixth forms usually offer A level courses alongside some vocational courses. Special school sixth forms offer vocational and lifeskills courses.

FURTHER EDUCATION COLLEGE

A levels, vocational courses including BTECs, supported internships, foundation /lifeskills courses

A Further Education (FE) college offers courses for all ages from 16-year olds up to adults.

Each FE college is different, but they usually offer a broad range of courses from A levels, BTECs to technical qualifications, supported internships and supported learning/lifeskills courses.

SPECIALIST POST 16 SETTINGS

A setting which offers specialist provision for students with very complex special educational needs whose needs cannot be met at an FE college or sixth form.

TRAINING PROVIDER

A smaller group environment offering vocational courses or work based learning courses, often specialising in specific vocational areas.

Qualification Options

WORK BASED	VOCATIONAL	ACADEMIC
	Pre-entry level	
	Entry level 1 Entry level 2 Entry level 3	Pre- GCSE
Traineeship/Supported Internship	Level 1	GCSE grade 1-3
Intermediate apprenticeship	Level 2	GCSE grade 4-9
Advanced apprenticeship	Level 3	A level
Higher apprenticeship	Level 4+	Degree level

	WORK BASED	VOCATIONAL /LIFESKILLS	ACADEMIC
Supported learning		✓	
Functional skills			✓
Supported Internship	✓		
GCSE			✓
BTEC	✓	✓	
NVQ	✓	✓	
A level			✓
Training provider	✓	✓	
FE College	✓	✓	✓
School Sixth form College		✓	✓
Specialist provider		✓	✓

